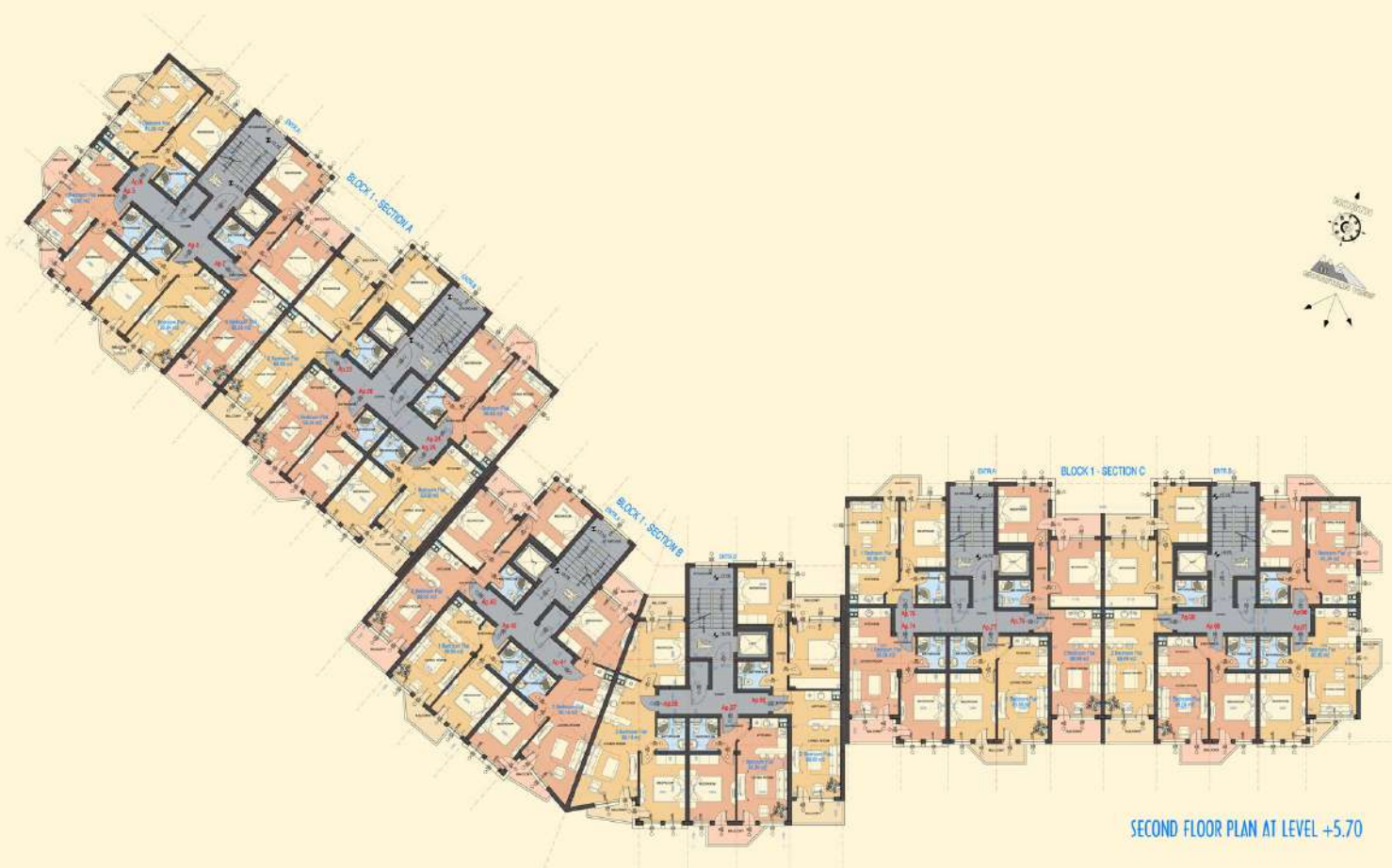






FIRST FLOOR PLAN AT LEVEL +2.85





SECOND FLOOR PLAN AT LEVEL +5.70



THIRD FLOOR PLAN AT LEVEL +8.55



FOURTH FLOOR PLAN AT LEVEL +11.40





FIFTH FLOOR PLAN AT LEVEL +14.25  
(with sloping ceilings)

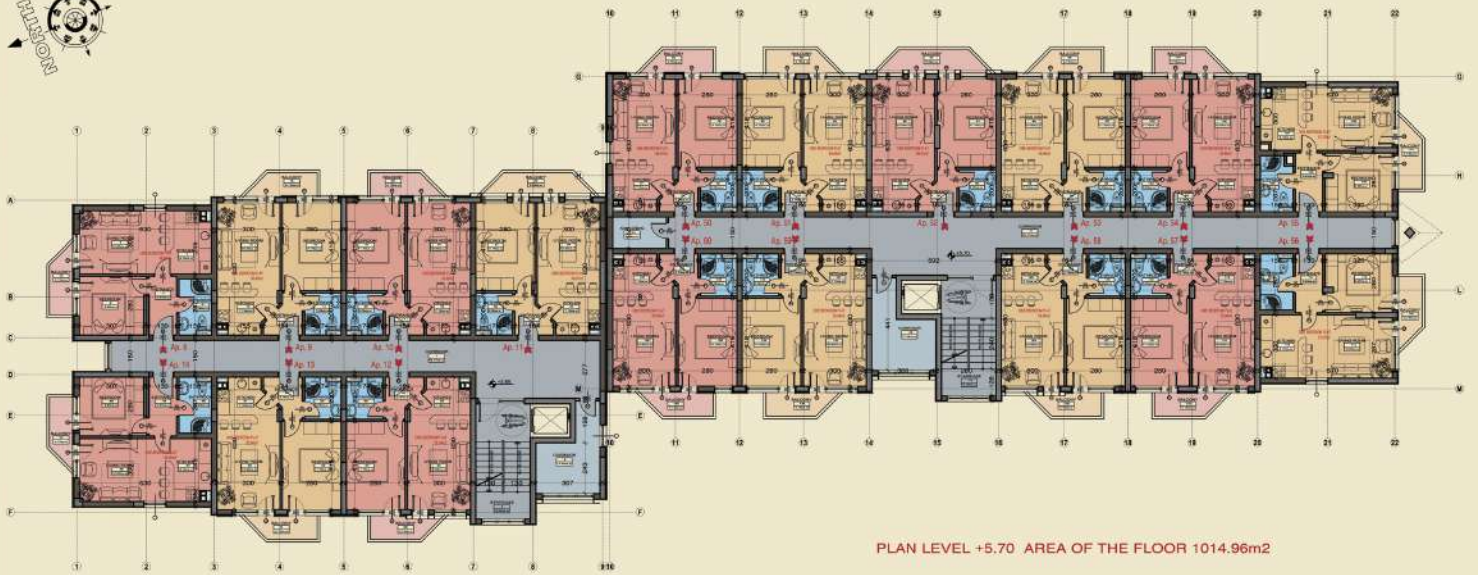


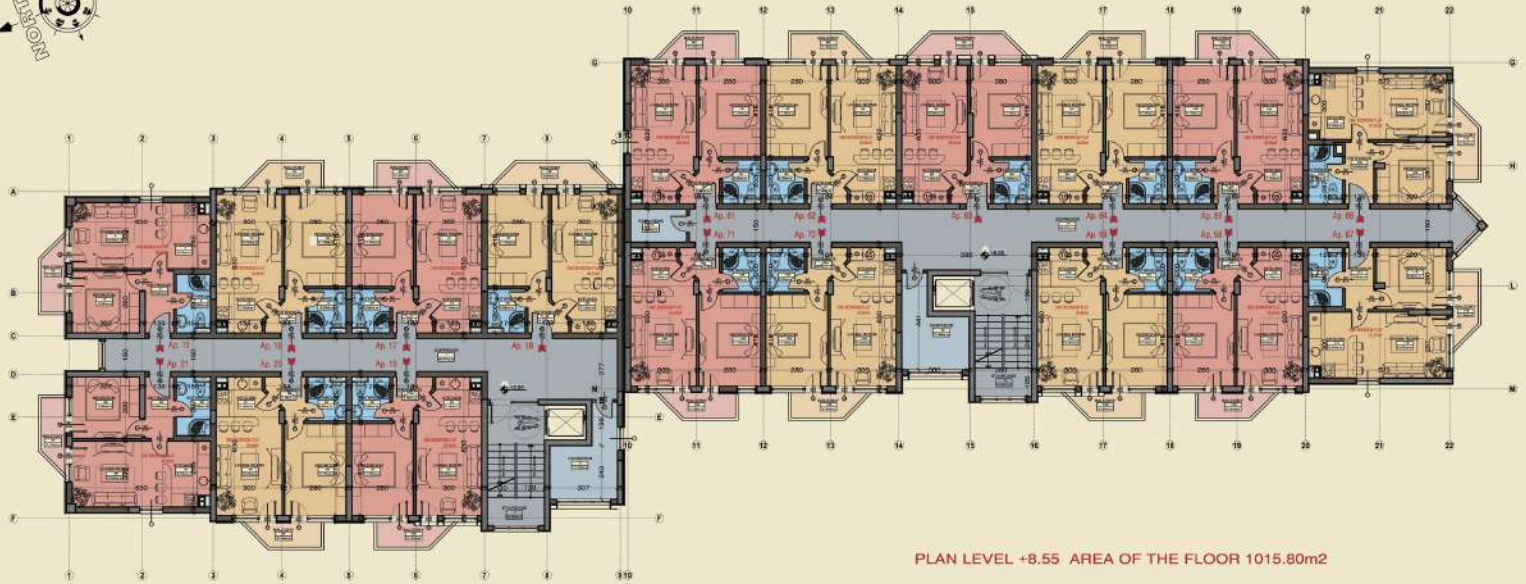






PLAN LEVEL +2.85 AREA OF THE FLOOR 1012.71m<sup>2</sup>





PLAN LEVEL +8.55 AREA OF THE FLOOR 1015.80m<sup>2</sup>





PLAN LEVEL +11.40 AREA OF THE FLOOR 1018.31m<sup>2</sup>



PLAN LEVEL +14.25 AREA OF THE FLOOR 668.5m<sup>2</sup>



PLAN LEVEL -3.45/-4.45 AREA OF THE FLOOR 1023.75m<sup>2</sup>







FIRST FLOOR PLAN AT LEVEL +2.95  
SECTION 1 - AREA - 507.85 m2  
SECTION B - AREA - 494.65m2



SECOND FLOOR PLAN AT LEVEL +5.70  
 SECTION 1 - AREA - 507.85 m<sup>2</sup>  
 SECTION B - AREA - 494.65m<sup>2</sup>



**THIRD FLOOR PLAN AT LEVEL +0.55**  
 SECTION 1 - AREA - 507.85 M<sup>2</sup>  
 SECTION B - AREA - 494.65M<sup>2</sup>





**FOURTH FLOOR PLAN AT LEVEL +11.40**  
**SECTION 1 - AREA - 507.85 m<sup>2</sup>**  
**SECTION B - AREA - 494.95m<sup>2</sup>**



FIFTH FLOOR PLAN AT LEVEL +14.25  
 SECTION 1 - AREA - 307.83 M2  
 SECTION B - AREA - 365.94 M2

